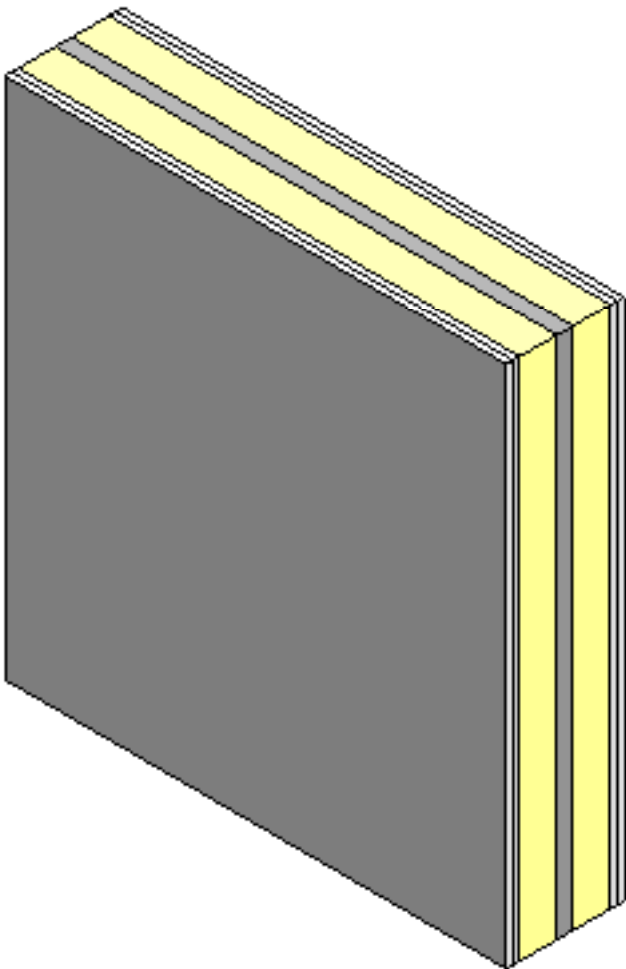
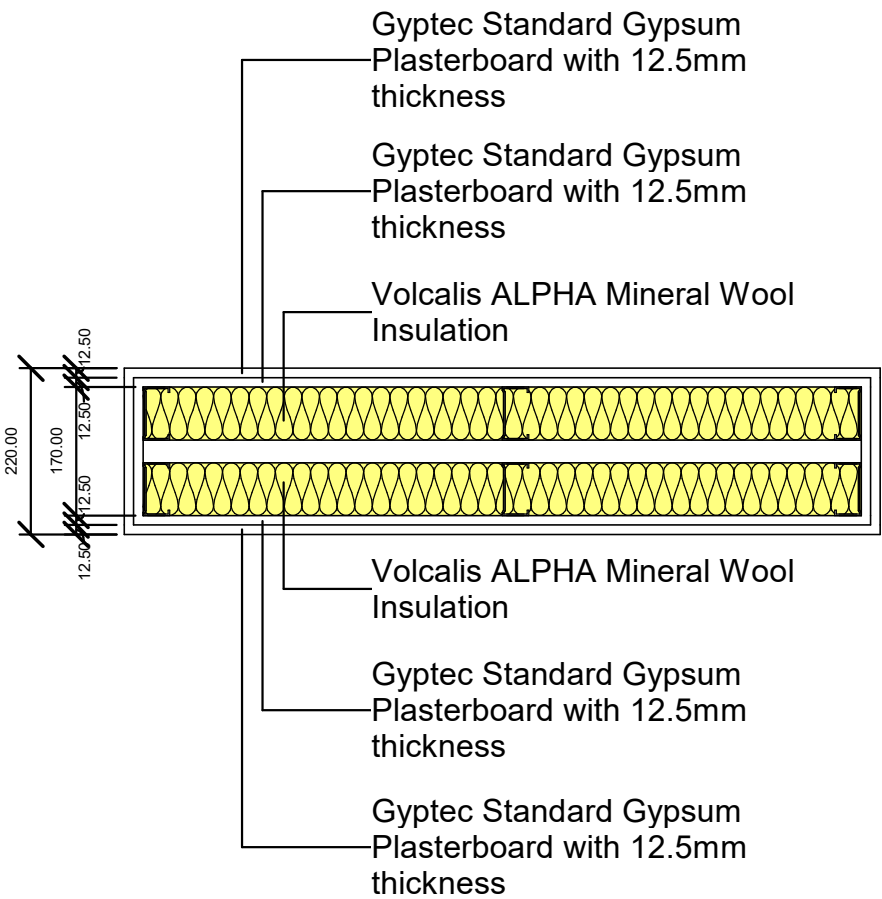
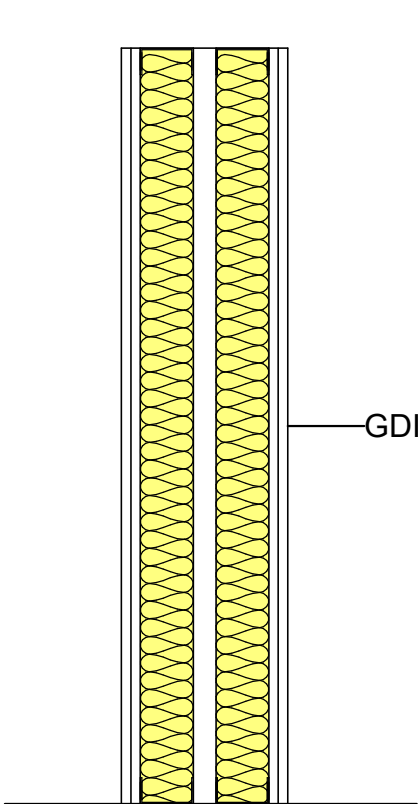


Wall Schedule Components quantities																			
Type	Area	Laminated gypsum plasterboard m² / m²	Laminated gypsum plasterboard Total	Metal frame Raia 70 m / m²	Metal frame Raia 70 Total	Metal frame Montante 70 m / m²	Metal frame Montante 70 Total	Tape 70 m / m²	Tape 70 Total	Paper tape m / m²	Paper tape Total	Paste GR2 Kg / m²	Paste GR2 Total	Screw PM25 un / m²	Screw PM 25 Total	Screw PM35 un / m²	Screw PM 35 Total	Mineral Wool m² / m²	Mineral Wool Total
GYPTEC-DIVISÓRIA DUPLA 220 BA13A	1.00 m²	4.20 m²	4.20 m²	1.90	1.90	4.20	4.20	1.90	1.90	6.00	6.00	1.4	1.4	14	14	28	28	2.12 m²	2.12 m²



DIVISÓRIA DUPLA 220 BA13A
03/2022
V0.3

Wall Schedule											
Manufacturer	Type	Function	Description	Type Comments	Weight Kg/m²	Fire Rating	Maximum Height (m)	Acoustic Insulation: Rw	Area	Cost / m²	Total Cost
GYPTEC	GYPTEC-DIVISÓRIA DUPLA 220 BA13A	Interior	GDIV 220/600 [2X13A+70+(30)+70+2X13A] MW2X60	Solution for interior drywall partition, consisting of two independent structures with horizontal metal profiles RAIA 70 and vertical metal profiles MONTANTE 70, spaced every 600 mm, on which 2 layers of Gyptec BA13A (STANDARD) plasterboards are fixed each side. Volcalis ALPHA mineral wool in the cavity space. Surfaces ready for final finishing of painting or decoration.	53.5	EI 60	3.20	67dB	1.00 m²	0.00	0.00